
PRODUCT DESCRIPTION

For exterior and interior finished wall systems. Provides integral color and surfaces similar to smooth stone, granite or glazed tile surfaces. Used for load bearing and non-load bearing walls. Can be erected in one operation without backup units. Provides considerable cost savings. Used in interior and exterior construction of low-rise and high-rise buildings, offices, residential condominiums, retail buildings, animal shelters, universities, government and military projects, food and beverage processing centers, industrial and commercial facilities, schools, extended care facilities, hospitals, water treatment plants, transportation facilities, prisons, medical buildings, residential construction... wherever a smooth hard, sealed, glazed or stone-like permanently adhered sanitary, decorative finish is required.

COMPOSITION:

SPECTRA-GLAZE® compound made with S-G Polymer is furnished by Texas Building Products along with other components as may be required to exceed ASTM C744 standards and other performance and test standards. The facing (up to 1/8") thick is factory applied to each block and becomes integral with the concrete, transforming standard concrete masonry units into a finished wall surface.

INTEGRAL BOND:

SPECTRA-GLAZE® finished facing is manufactured as a permanent part of the block. The molded finish penetrates deep into the pores of the block and is heated for durability. It becomes an integral part of the unit that cannot be removed without destroying the concrete itself.

BUILDING CODES:

SPECTRA GLAZE® pre-faced concrete masonry units are acceptable in all national building codes where concrete masonry units are accepted.

APPEARANCE:

SPECTRA-GLAZE® units are available in their own unique range of standard and custom colors, scale and sculptured faces are not available in natural stone, brick and marble. Creams, whites, grays, tans, heathers and pastels provide an aged beauty and natural look that is a pleasing alternative to limestone, synthetic stone, marble slate, brick, glass, high-grade paint, stucco and ground face stones at a fraction of the cost. As with all products made using naturally occurring mined minerals, characteristic ranges exist which enhance the appearance of walls.

COLOR FASTNESS:

SPECTRA-GLAZE® units have built-in light fastness and color change has been found to be minimal in South Florida field testing and in laboratory accelerated testing. It is also highly impervious to acid rain.

As with most materials, proper use, design and detailing are prerequisites. All colors show some light change under continuous exterior exposure. As with other exterior material, some gradual and uniform weathering is expected.

SPEC DATA SHEET
SPECTRA GLAZE®
FACTORY GLAZED CMU



COLOR RANGE:

SPECTRA-GLAZE® units are available in standard and designer colors. VARI-TONE® series earth tone finishes provide both a surprisingly economical and attractive alternative to natural materials such as granite, stone, marble, etc. Double glazed units may be furnished with each face a different color. Other colors can be matched upon request.

TEXTURE AND SCALE:

SPECTRA-GLAZE® and scored series units offer a wide selection of texture, scale and pattern. Scored series provides the choice of reduced scale and pattern with the economy of large 8x16 block, e.g., 8x8 score (da1) 5x8 score (da5), 4x8 score (da2), and brick score (da3), other scores may be furnished on request. Score shall be 1/4" deep, consult your local manufacturing plant for precise specifications.

FINISH:

SPECTRA-GLAZE® units shall be free from chips, cracks and pinholes in the finished walls when viewed with diffused lighting at a distance of 20' at right angles to the wall.

INTENDED USE:

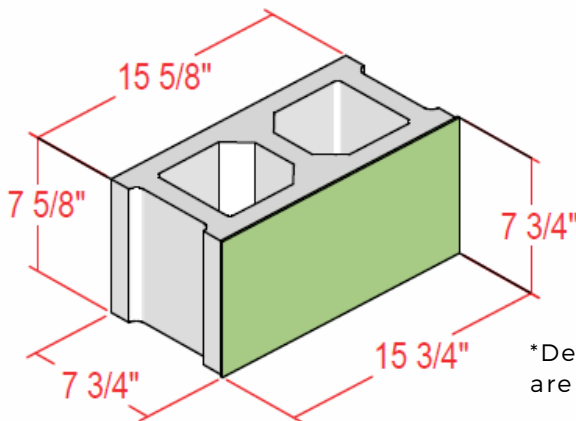
Standard construction detailing including dry construction, moisture and water protection, water stops, weep holes, elastic and durable mortar, metal or precast concrete caps, flexible control joints and drainage overhangs are a pre requisite of good design and proper use. Durable exterior wing walls require weep holes thru the wall or equivalent. Waterproof flashing should be used under all capping. Vertical expansion should also be used.

SPEC DATA SHEET
SPECTRA GLAZE®
FACTORY GLAZED CMU



DIMENSIONS:

The durable SPECTRA-GLAZE® surface material has precision edges with a gentle safety taper at the edge creating a smooth flat or sculptured wall surface between mortar joints depending on the face style selected. All dimensions of SPECTRA-GLAZE® units are modular. The facing dimensions are 7 3/4" x 15 3/4". There is a 1/16" lip running around the perimeter of the 7 5/8" x 15 5/8" modular block. The glazed surface can therefore be laid with a 1/4" exposed mortar joint in regular 8" coursing, subject to adjustment for tolerances. Variances are expected within ASTM standards.



*Detailed drawings of all sizes and dimensions are available at www.spectraglaze.com.

SIZES AND SHAPES:

Units are available in nominal 2, 4, 6, 8, 10, 12" thickness, standard block heights and shapes. Units supplied will be two or three core, open or closed end, depending upon local block practices. A line of various shapes is furnished with basic units including, stretcher, jamb, cap and cove base units. Units are available prefaced on both sides. These **double-faced units are not recommended when aesthetics are essential for both sides of the wall**. Use double-faced units only when economy is more important than appearance.

DELIVERY, STORAGE AND HANDLING:

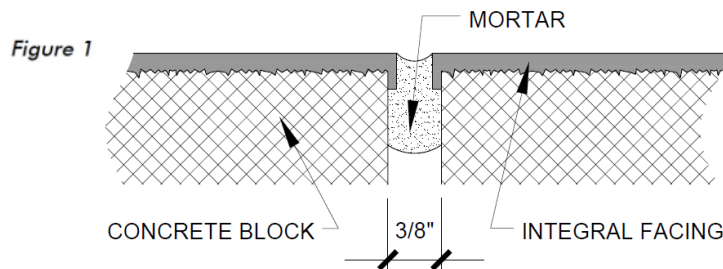
SPECTRA-GLAZE® masonry units will be delivered to job site palletized. Units shall be stored as near as possible to their final position in the wall. SPECTRA-GLAZE® masonry units are to be stored on level ground and are to be provided with a tarpaulin or similar, as protection from the weather. Do not double stack pallets of SPECTRA-GLAZE® units. Claims for chipped or damaged block will not be allowed if stacking of pallets has occurred. Each unit is protected by layer separators to prevent damage in transit and on the job site. This cover and any individual cardboard covers are to be retained until the block is to be placed in the wall. Blocks are to be handled carefully.

Prior to installation, all units should be inspected for conformance to manufacturer's specifications. **Do not install damaged or non-conforming units.** Damaged or non-conforming units shall be available for inspection by manufacturer. Replace any units damaged by contractor at contractor's expense. All damaged units not reported as damaged upon inspection at time of delivery are presumed to have been damaged by contractor or improper handling at job site. Contractor, at their expense, shall remove any scratches caused by mishandling of the units. Any defective units installed are the responsibility of the contractor.

INSTALLATION

PREPARATORY WORK:

Prior to the placing of units on the project, a properly protected sample panel at least 4' x 4' should be erected at the job site for each color selected, and include all block types and sizes to be used in that color to show approved appearance, color and range. SPECTRA-GLAZE® masonry units are manufactured using patented technology that ensures consistent dimensional integrity within tolerances defined by ASTM C744 for the glazed surface and ASTM C90 for the concrete masonry units. As measured from the points described on the attached schematic, (Figure 1) the glazed surface has a maximum allowable variation of 1/16" documented by Paragraphs 6.1 and 6.2 of ASTM C744. The concrete masonry unit is manufactured to be within the dimensional tolerance of 1/8" defined in Paragraph 6.1 of ASTM C90.



LAYING THE WALL:

SPECTRA-GLAZE® units are to be installed using the glazed surface as the guide and allowing for 1/4" apparent mortar joint per attached schematic. (Figure 1). If installed following the schematic diagram, the lip of the unit is hidden by the mortar joint. The lip of a SPECTRA-GLAZE® unit does not define the face thickness, but is a function of the manufacturing process. **It is essential, in order to maintain the quality of the finished wall, that all faces are laid plumb and true to a line strung horizontally at the glazed face.** Wherever possible, dry positioning should be employed by the contractor in order to satisfy themselves that the required tolerances remain. Complete masonry construction using procedures and workmanship consistent with the best masonry practices.

Lighting: Provide adequate lighting for masonry work by placing all lighting at a reasonable distance from the wall for even illumination. Do not use trough lighting.

Cutting: Where SPECTRA-GLAZE® units are to be cut to fit on the job site, a power-driven masonry saw, i.e. Clipper saw, is to be used. Units should not be cut by hand.

Jointing: SPECTRA-GLAZE® block joints can be tooled or can be raked and pointed with a specified mortar material. All exterior joints must be filled and struck to protect the wall from the elements. Raked joints or bare scores should not be used on the exterior.

Scored: Where SPECTRA-GLAZE® units are specified to be scored it is recommended that when stack bond appearance is selected, use stack bond construction. All structural joints should be raked back at least 1/4" and allowed to set. Tuck point raked joints and scored joints at the same time. Other scores may be customized to your design.

Water Control: For adequate water control, use large weep vents at least 4" long in vertical joint for every second block in exterior base and foundation to prevent water penetration. Also, use immediately above all flashing, bond beam, solid filled or other water stop locations in the wall. Continuous metal capping, stone, or precast slab plus the highest quality flashing and adequate over hangs are required to cap off an exterior SPECTRA-GLAZE® masonry wall. Metal capping should have at least a 4" overhang. Mortar used in capping should be impervious to water penetration and freeze/thaw. All exterior joints must be full and struck, never left raked. All laying mortar should contain appropriate water-repelling additives to insure water-proof mortar joints and good adhesion. Exposed mortar joints are raked back 1/4" and tuckpointed with epoxy mortar or other similar water-proof joint system.

Sample panels should be erected to reflect exterior specifications prior to authorizing final construction. The sample panel establishes a point of agreement and acceptance on all aspects of the wall assembly.

CLEANING

As work progresses, all units should be cleaned to remove excess mortar, mortar lumps and other materials with clean, damp cloths. Prevent mortar from hardening on the face by promptly cleaning wall sections as they are installed. Use soft, clean rags with masonry detergent such as Vanitrol, or similar proprietary cleaners in accordance with the manufacturer's instructions. Rinse well and wipe dry.

CAUTION: Do not use paint remover, lacquer thinner, epoxy thinner, methylene chloride, acetone or muriatic acid to clean the glazed face.

CAUTION: Do not power wash or use abrasives to clean the glazed face.

PATCHING

Damaged or chipped units should not be installed. Contact your SPECTRA-GLAZE® manufacturer for a patch kit.

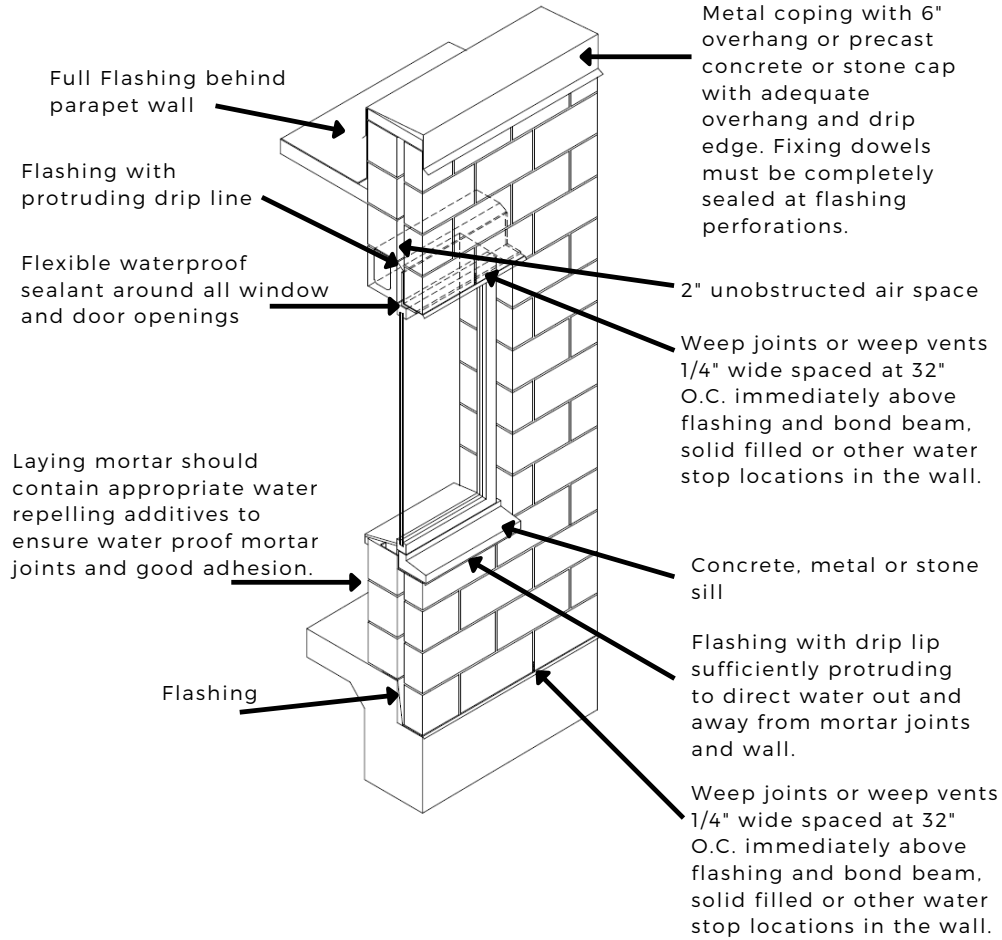
Small scratched and scuffs can be repaired using a 50/50 mixture of boiled linseed oil and turpentine mixed well and applied with a clean rag. After a few minute, the excess should be removed from the glazed surface with a clean, dry rag. **Do not get this mixture into the joints as it will darken the mortar.**

Small scratches and gouges can be patched as a marginally acceptable alternative to replacement of the whole unit. The best way to achieve a reasonably good patch would be as follows:

1. Clean any/all loose debris out of the chipped area.
2. Fill the chip or hole with autobody putty, which is a two-part polyester resin/hardener material that dries in approximately 1.5 hours. Follow instructions carefully.
3. After the patch has set, sand the patch to the desired shape.
4. Have a local paint store match the color of the glazed blocks in a semi-loss paint. carefully paint the repaired area.

EXAMPLES

EXTERIOR WALL CONSTRUCTION



**EXTERIOR WALL CONSTRUCTION
 8" CORNER**

**INTERIOR WALL CONSTRUCTION
 8" CORNER**

